



# TRIMBLE APPLICATION GUIDE

[www.i-edu.com.au](http://www.i-edu.com.au)  
[get@inspiregrp.com.au](mailto:get@inspiregrp.com.au)

TEACH BY DESIGN<sup>®</sup>

# CONTENTS

|  |             |
|--|-------------|
| <b>Trimble Apps in Education</b> ..... | <b>01.</b>  |
| <b>Inspired Podcasts</b> .....         | <b>.05.</b> |
| <b>Inspired Training</b> .....         | <b>.07.</b> |

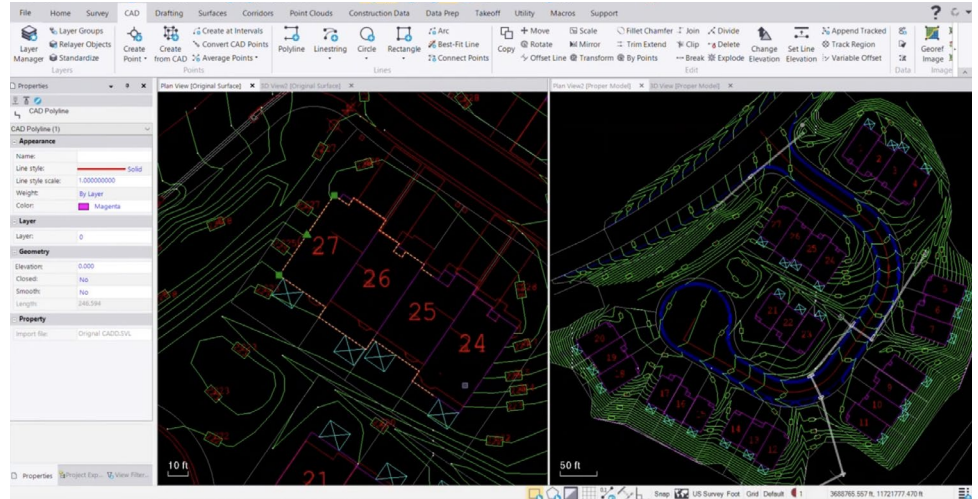


# TRIMBLE APPS IN EDUCATION

## Trimble Business Center

Make better decisions, decrease costly mistakes, and increase efficiency in the office and on the job site. Powerful tools help you quickly and easily create accurate, integrated 3D constructible models for construction surveying and machine control.

LEARN MORE



## Trimble Subscriptions

Trimble Platform as a Service is a flexible, all inclusive and connected construction solution bundled into a predictable contract. Imagine getting instant upgrades all at once. Then add construction cloud services and world-class support to keep your operations current and optimized, without the costly upfront investment.

LEARN MORE



## Trimble Stratus

With Trimble Stratus Software, use drones to map, measure and share accurate information about work sites and assets to make quicker decisions, avoid mistakes and grow profits.

LEARN MORE



## WorksManager Software

Software to remotely send construction-ready models to machines in the field, giving confidence that they are always working to the latest designs. Keep track of the location of your devices and machines and monitor operations with detailed activity information to keep jobs on track and costs down.



LEARN MORE



## WorksOS

Jobsite monitoring solution that allows site managers to accurately monitor jobsite activity and real-time progress-to-plan, remotely, with information straight from the machine

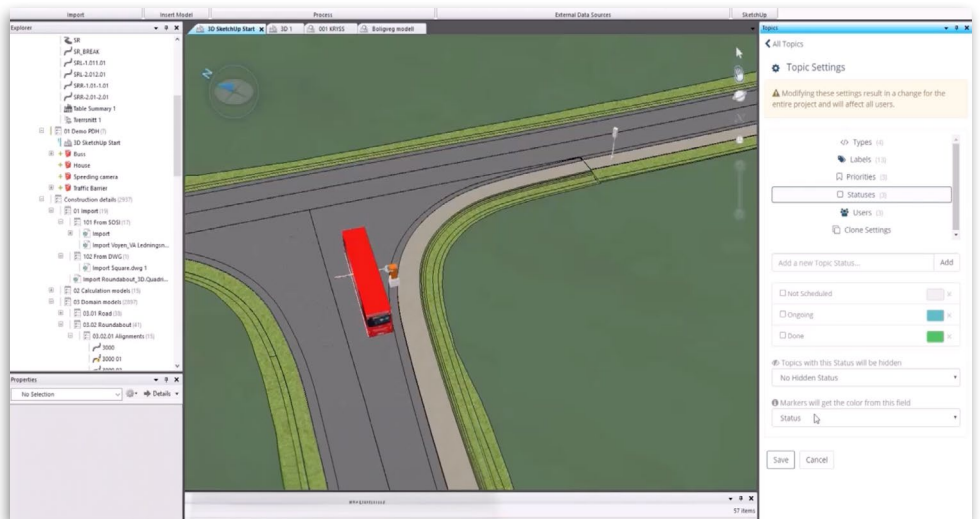


LEARN MORE



## Novapoint

Civil Engineers can with Novapoint design complex 3D models and visualize in multiple ways to communicate effectively. Efficiently build complex models of roads and railways, including 3D terrain surfaces, sub-surface layers and structures such as buildings, bridges, road signs, cables and vegetation.



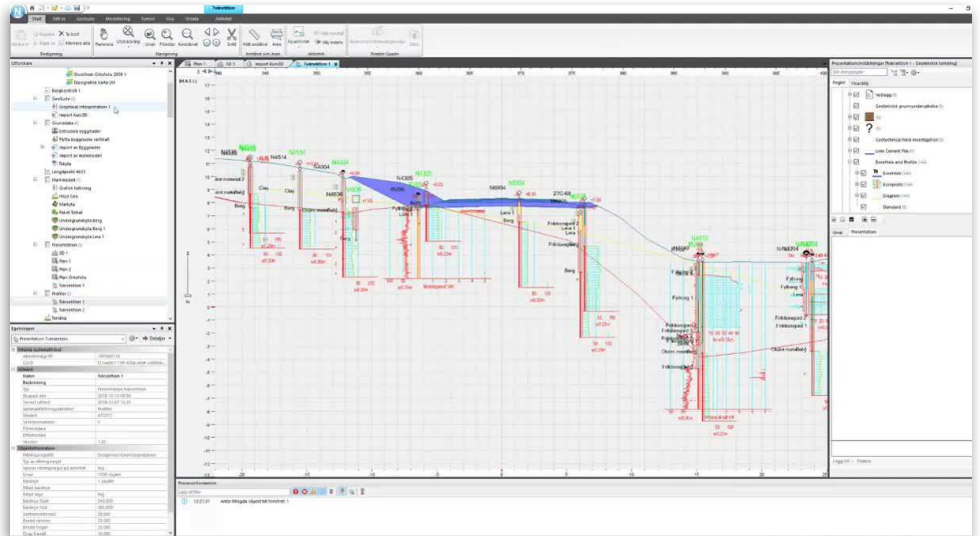
LEARN MORE



## Novapoint Geosuite

A geotechnical engineers platform to design, construct, model and calculate projects in a seamless collaborative environment. Novapoint Geosuite enables project and data sharing through Trimble's Quadri collaborative software system, making it easier to navigate, manage and review projects at all stages of design.

LEARN MORE



## Quadri

Trimble Quadri is a cloud-based BIM server and collaboration platform, enabling all stakeholders to share a central seamless project model – facilitating tight teamwork between planners, designers, contractors and the project owner. Quadri is your common data environment platform and is the key for model-based design.

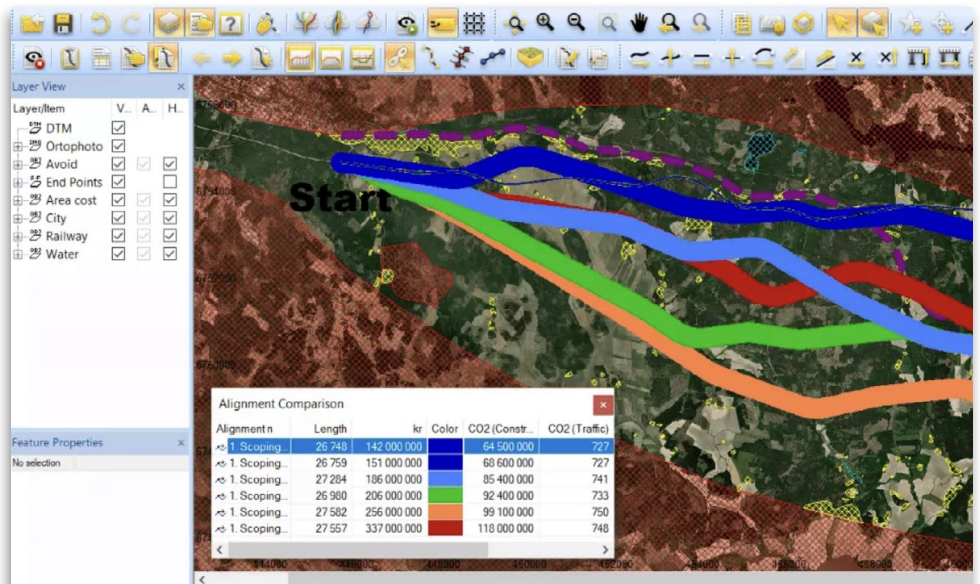
LEARN MORE



## Quantm

Quantm alignment planning helps road and rail planners through the complex process of selecting and generating 3D corridors and alignments with the unique route optimization technology. Quantm generates millions of alternative alignments and returns a range of 10-50 of the best options for review.

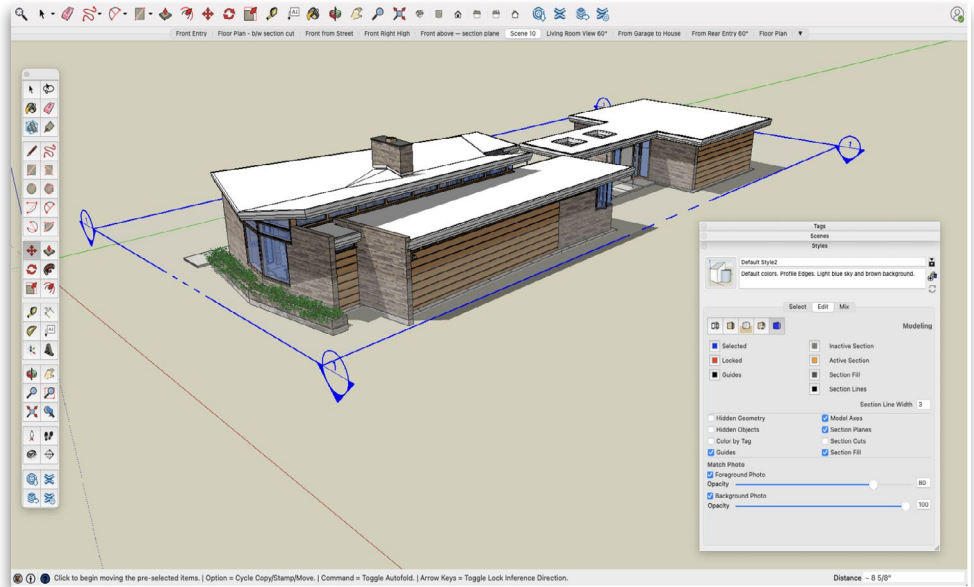
LEARN MORE



## SketchUp

Push/pull surfaces into 3D forms, and add material details to visualise. Turn your models into scaled drawing sets in LayOut. Clearly communicate the details in 2D with different model views, dimensions, callouts, and graphics. And when it's time, export pages as PDFs, images, and CAD files.

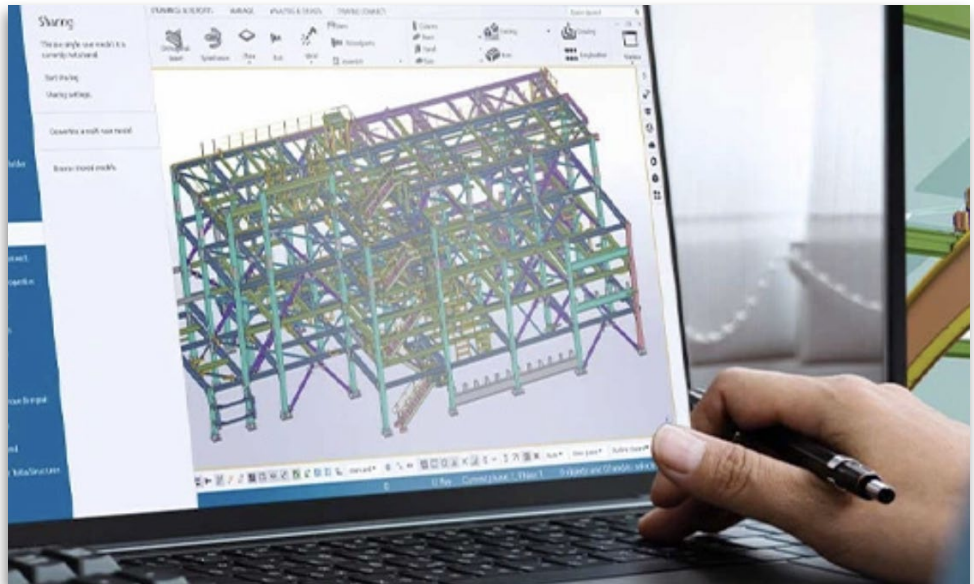
LEARN MORE



## Tekla

Powerful database-driven civil engineering software for linear and site design projects. Tekla Increases team efficiency by providing multi-user collaboration management with access controls. Produces high quality designs with seamless database-driven data management.

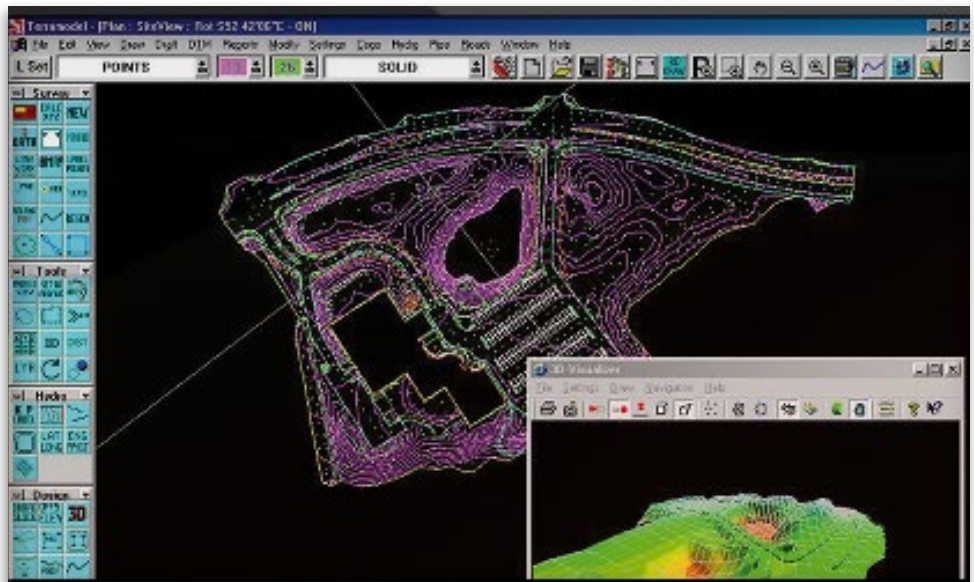
LEARN MORE



## Terramodel

Using Terramodel software you can import data collected using Trimble controllers, do all the necessary COGO calculations, quickly and easily produce roadway designs, generate contours, and calculate volumes.

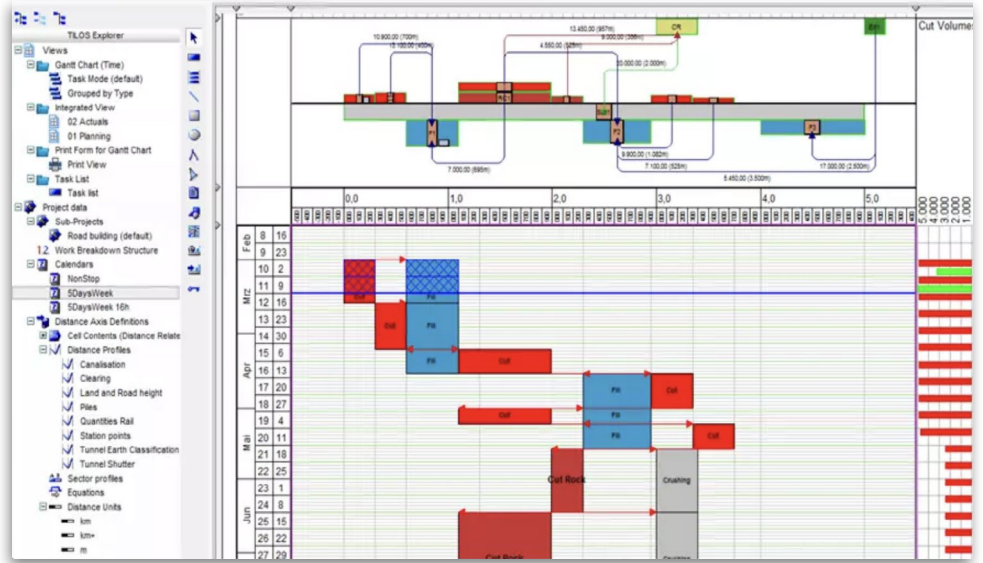
LEARN MORE



## Tilos

Successful planning of large and spread out civil construction projects is an optimization challenge. Tilos helps establish and visualize the project details and the schedule in one view, providing you with detailed information about work in place, by location.

LEARN MORE





# INSPIRED PODCASTS



### Inspired Design with Rashan Senanyake

Inspired Educations Director Rashan Senanyake Podcast, is the missing link where design and education meets. Our guests sharing their knowledge in design, design education, design thinking, teaching techniques, industry standards as well as the study of design, connects the knowledge gaps in the design industry from a secondary, tertiary and industry stand point. Rashan is an author, speaker, designer and a passionate enthusiasts of both design and education.

[LEARN MORE](#)



### Everything SketchUp with James Charnley SEASON 3 - EP 19

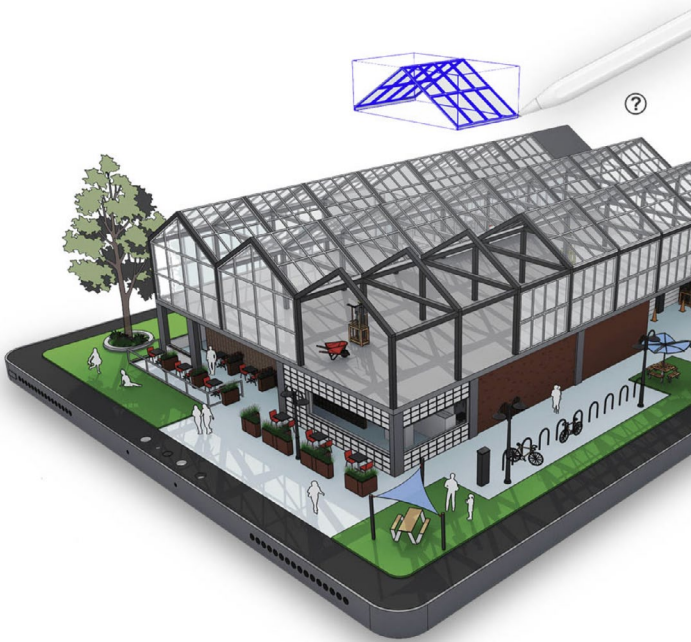
In this episode, James Charnley (BuildingPoint Australia– Technical Consultant) and I unravel one of the most popular software applications in Design – SketchUp. Together we discuss how Sketchup helps design within the AEC, how it enhances the creativity and skills of designers, and how you can get the most out of its capabilities. James also provides some of his personal advice for design students, educators, and professionals. James also hints at what's to come for the future of this amazing application and what to look out for! Tune into this episode for a sneak peek into the world of SketchUp!

[LEARN MORE](#)





# INSPIRED TRAINING



## SketchUp - Design and model on the go!

SketchUp for iPad combines the power of 3D with the ease of sketching by hand to allow AEC professionals to more effectively create, edit and collaborate on projects while on-site, on the go, and in the office.

Move seamlessly between SketchUp for iPad, SketchUp for Web and SketchUp Desktop applications.

As Australia's Only Authorised Training Partner (ATP), Work with our expert industry trainers to harness the power of SketchUp and learn essential industry skills, tailored for the Australian Education sector.

[LEARN MORE](#)



**INSPIRED**  
• EDUCATION  
TEACH BY DESIGN®



[www.i-edu.com.au](http://www.i-edu.com.au) | [get@inspiregrp.com.au](mailto:get@inspiregrp.com.au) | [Disclaimer](#)

© INSPIRED EDUCATION AUSTRALIA PTY LTD. ALL RIGHTS RESERVED.